



# Padstow School & Nursery

Head of School: Mrs K Whitford

Wednesday 4<sup>th</sup> January 2023

Dear Parents/Guardians,

Wishing you all a Happy New Year!

I hope you have had a restful and enjoyable Christmas holidays and that you are all refreshed and ready for what the Spring term brings.

This half term our topic is called 'Superheroes'.

*Intergalactic greetings, young heroes. It's time to rescue the planet from evil villains. Who's your favourite superhero? Spiderman? Wonder Woman? Maybe your heroes are ordinary people who've achieved great things. Or is it those people who save lives in our emergency services that you admire most? Superheroes have super senses. Use yours to identify mystery items by their smell, taste, sound and touch. What do true superheroes eat to keep their senses and special powers sharp? Is that phone box free? Please excuse me – I have to save the world.*

Below, there is some information about the school year and some ideas about helping your child at home.

## Phonics

Kittiwake have been working hard in phonics. We have reassessed them and they will be starting in their new/continued groups next week.

In June this year, Y1 and some Y2 have their phonics screening check so it would really benefit the children if you could recap the sounds, we send home in their sound books as regularly as you can. It really is the foundation to becoming fluent readers and writers. Last year most children will have taken home a Set 1 and a Set 2 sound book. Please let me know if you do not have these books.



Please continue to recap all their sounds as regularly as you can.

## Reading

Reading leaders will give each child a Read Write Inc book as well as a book bag book to read at home. These will be changed as we move through the scheme. The children practise their reading with books that match the phonics and the 'tricky words' they know. They start thinking that they *can* read and this does wonders for

T: 01841 532510

E: [hello@padstowschool.org](mailto:hello@padstowschool.org)

W: [www.padstowschool.org](http://www.padstowschool.org)

Padstow School, Grenville Road, Padstow, Cornwall PL28 8EX

A Company Limited by Guarantee. An Exempt Charity

Registered in England & Wales - Company No. 07387540

Registered Office: Aspire Academy Trust, Unit 20, St Austell Business Park, St Austell, Cornwall PL25 4FD



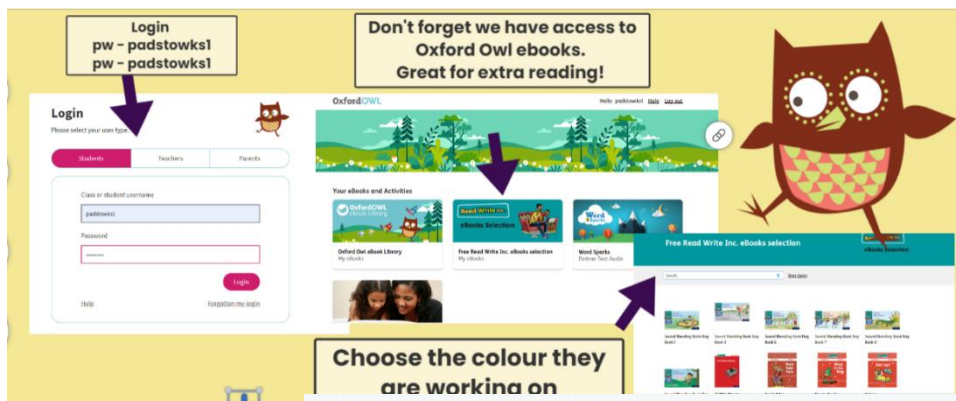


# Padstow School & Nursery

Head of School: Mrs K Whitford

their confidence. The children also practise reading (and spelling) what we call 'tricky words', such as 'once,' 'have,' 'said' and 'where'.

Children should read at home **at least five times a week**. All reading should be recorded in their Reading Record books, please also write in here any other home reading you might share.



## Maths

This half term we will be continuing to learn about addition and subtraction. We will be securing our knowledge of column addition and subtraction. We will then move onto shape, multiplication and, after half term, money.

## Homework

We use 'Seesaw' as our online learning platform in Kittiwake class. I will be uploading a weekly maths activity linked to what we have been learning. This is intended for you to work on together, consolidating the week's learning.

	Week 1	Week 2	Week 3	Week 4	Week 5	Week 6	Week 7	Week 8	Week 9	Week 10	Week 11	Week 12
Autumn term	Number Place value VIEW				Number Addition and subtraction VIEW					Geometry Shape VIEW		
Spring term	Measurement Money VIEW		Number Multiplication and division VIEW			Measurement Length and height VIEW		Measurement Mass, capacity and temperature VIEW				
Summer term	Number Fractions VIEW		Measurement Time VIEW		Statistics VIEW		Geometry Position and direction VIEW					Consolidation

Suggested websites and Apps to help support your child's learning:

- The Human Body [Human body - KS1 Science - BBC Bitesize](#)
- Mr Thorne Network on Youtube – fantastic phonics videos.

T: 01841 532510

E: [hello@padstowschool.org](mailto:hello@padstowschool.org)

W: [www.padstowschool.org](http://www.padstowschool.org)

Padstow School, Grenville Road, Padstow, Cornwall PL28 8EX

A Company Limited by Guarantee. An Exempt Charity

Registered in England & Wales - Company No. 07387540

Registered Office: Aspire Academy Trust, Unit 20, St Austell Business Park, St Austell, Cornwall PL25 4FD





# Padstow School & Nursery

Head of School: Mrs K Whitford

- BBC Bitesize KS1
- Literacy games - <https://www.topmarks.co.uk/english-games/5-7-years/letters-and-sounds>
- Ruth Miskin  
[https://www.youtube.com/channel/UCo7fbLgY2oA\\_cFCIg9GdxtQ](https://www.youtube.com/channel/UCo7fbLgY2oA_cFCIg9GdxtQ)
- Teach your Monster to read
- Oxford Owls <https://home.oxfordowl.co.uk/at-school/year-2-at-primary-school/maths-curriculum-year-2-age-6-7/>
- Times Table rockstars
- Numbots

## Spellings

Children will have weekly spellings to practise and learn. Each child will have a spelling book in which these weekly spellings can be practised. If your spelling book is full please let me know and I will provide another one. There are lots of different ways to learn their spellings. It is important that they also understand the meaning of the words they are learning. Can they put them into context? Can they write a sentence including one or two? Year 2 will have a weekly spelling test on a Friday. Please find this half terms spelling list attached.

## PE

PE will be taught on a **Monday** and **Friday**. Please ensure your child brings their kit to school at the beginning of the week. This can be left in school for the week. We will also have a shorter PE session on a Friday, they can wear their outdoor learning clothes, however, please ensure they have their trainers with them.

## Outdoor Learning

This term outdoor learning will take place on **Fridays**. We plan to be outside whatever the weather!

- Each child to keep a pair of wellies in a named bag in school.
- Children to wear suitable clothes for outdoor learning (eg clothes you will not mind coming home muddy!). **Their school jumper should still be worn.**

## Other Information:

We encourage your child to have water bottles in school, so they have access to water throughout the day. Snacks from home need to be labelled and put in the snack tray for break time. Please can you help us with our Healthy School status and

T: 01841 532510

E: [hello@padstowschool.org](mailto:hello@padstowschool.org)

W: [www.padstowschool.org](http://www.padstowschool.org)

Padstow School, Grenville Road, Padstow, Cornwall PL28 8EX

A Company Limited by Guarantee. An Exempt Charity

Registered in England & Wales - Company No. 07387540

Registered Office: Aspire Academy Trust, Unit 20, St Austell Business Park, St Austell, Cornwall PL25 4FD





# Padstow School & Nursery

Head of School: Mrs K Whitford

provide fruit, veg or other healthy snacks. Snack ideas can be found on <https://www.nhs.uk/change4life/food-facts/healthier-snacks-for-kids>. Could they, also, only bring to school a lunch box (if not having school lunches), coat, hat, sunscreen, book bag and water bottle (**water only**) - all labelled.

I will only be available for a brief exchange of information at the class door so if you feel you need a longer conversation, please make an appointment for me to call you by telephoning or emailing the office, on [hello@padstowschool.org](mailto:hello@padstowschool.org), and I will endeavour to get back to you the same day.

Yours sincerely

Mrs Vicky Bruce  
Kittiwake Class Teacher and Key Stage One Lead

T: 01841 532510

E: [hello@padstowschool.org](mailto:hello@padstowschool.org) W: [www.padstowschool.org](http://www.padstowschool.org)

Padstow School, Grenville Road, Padstow, Cornwall PL28 8EX

A Company Limited by Guarantee. An Exempt Charity  
Registered in England & Wales - Company No. 07387540  
Registered Office: Aspire Academy Trust, Unit 20, St Austell Business Park, St Austell, Cornwall PL25 4FD

