



Padstow School & Nursery

Head of School: Mrs K Whitford

Monday 17th April 2023

Dear Parents/Guardians,

I hope you have fun and restful Easter holidays. This half term we will be starting our new curriculum theme 'Coastlines'.

In the Coastline project, your child will use maps to learn about the location of the world's seas and oceans and keys to learn about map symbols. They will also find out about the directions on a compass. They will learn about the human and physical features of a coastline, including the effects of erosion. They will be learning about living things and their habitats as well as investigating structures in Outdoor learning.

Below, there is some information about the school year and some ideas about helping your child at home.

Key Stage One SATS

During the last two of weeks of May, Year 2 will be undertaking their Standard attainment tests (SATS). These test papers are administered by myself and my team. They do not go away for marking, they are marked by myself.

These will help me make judgements about the standard your child is working at in English, Maths and Science. These tests, along with your child's work throughout the year, help me to assess your child's performance and, as they move up to key stage 2, identify their needs. Year 2 are familiar with these tests and the sort of questions they may be asked. I have incorporated them into our daily lessons/teaching since September. They may not even realise that they have taken them!

Please continue to support your child by reading with them regularly and asking the questions from the back of the books. Work together when completing the maths homework on Seesaw, use Times Table Rockstars and Numbots to recap.

T: 01841 532510

E: hello@padstowschool.org

W: www.padstowschool.org

Padstow School, Grenville Road, Padstow, Cornwall PL28 8EX

A Company Limited by Guarantee. An Exempt Charity

Registered in England & Wales - Company No. 07387540

Registered Office: Aspire Academy Trust, Unit 20, St Austell Business Park, St Austell, Cornwall PL25 4FD





Padstow School & Nursery

Head of School: Mrs K Whitford

Phonics

Kittiwake will start their new/continued Read Write Inc groups this week. We will be recapping tricky sounds and working on their comprehension skills.

In June this year, Y1 and some Y2 will have their phonics screening check. It would really benefit the children if you could recap the sounds learnt, these are stuck in their reading diaries at the start of each new book.

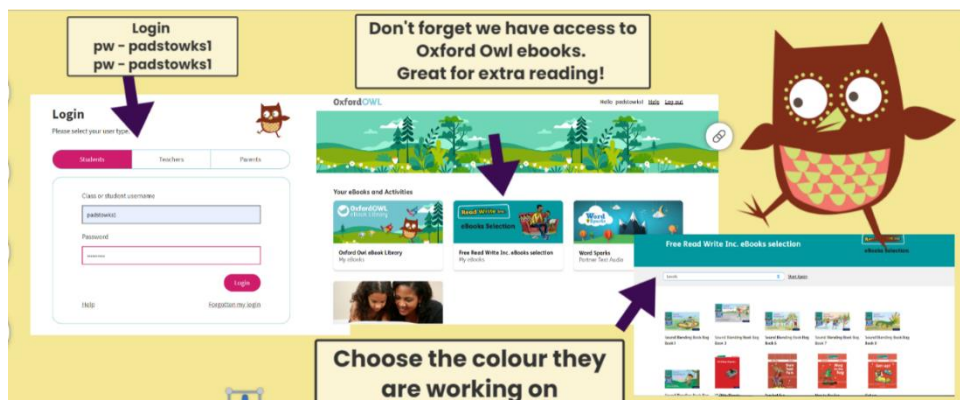
In the front of their RWI books you will find a chart containing speed sounds and words related to the books they are reading. Each child will be able to tell you how we practise these (See below for an example).

Reading

Reading leaders will give each child a Read Write Inc book as well as a book bag book to read at home. These will be changed as we move through the scheme. The children practise their reading with books that match the phonics and the 'tricky words' they know. They start thinking that they can read and this does wonders for their confidence. The children also practise reading (and spelling) what we call 'tricky words', such as 'once,' 'have,' 'said' and 'where'.

Children should read at home **at least five times a week**. All reading should be recorded in their Reading Record books, please also write in here any other home reading you might share. We will count reads weekly and give our reading at home certificates.

If your child reads separately with an adult at school, this will be recorded in the Reading Record in pink pen.



T: 01841 532510

E: hello@padstowschool.org

W: www.padstowschool.org

Padstow School, Grenville Road, Padstow, Cornwall PL28 8EX

A Company Limited by Guarantee. An Exempt Charity

Registered in England & Wales - Company No. 07387540

Registered Office: Aspire Academy Trust, Unit 20, St Austell Business Park, St Austell, Cornwall PL25 4FD





Padstow School & Nursery

Head of School: Mrs K Whitford

Maths

This half term we will continue to learn multiplication and division. We will then move onto money, fractions and time.

Homework

We use '**Seesaw**' as our online learning platform in Kittiwake class. I will be uploading a weekly maths activity linked to what we have been learning. This is intended for you to work on together, consolidating the week's learning.

Suggested websites and Apps to help support your child's learning:

- Mr Thorne Network on Youtube – fantastic phonics videos.
- BBC Bitesize KS1
- [Living things and their habitats - KS1 Science - BBC Bitesize](#)
- Literacy games - <https://www.topmarks.co.uk/english-games/5-7-years/letters-and-sounds>
- Ruth Miskin https://www.youtube.com/channel/UCo7fbLgY2oA_cFCIg9GdxtQ
- Teach your Monster to read
- Oxford Owls <https://home.oxfordowl.co.uk/at-school/year-2-at-primary-school/maths-curriculum-year-2-age-6-7/>
- Times Table rockstars
- Numbots

Spellings

Children will have weekly spellings to practise and learn. Each child will have a spelling book in which these weekly spellings can be practised. If your spelling book is full, please let me know and I will provide another one. There are lots of different ways to learn their spellings. It is important that they also understand the meaning of the words they are learning. Can they put them into context? Can they write a sentence including one or two?

T: 01841 532510

E: hello@padstowschool.org

W: www.padstowschool.org

Padstow School, Grenville Road, Padstow, Cornwall PL28 8EX

A Company Limited by Guarantee. An Exempt Charity

Registered in England & Wales - Company No. 07387540

Registered Office: Aspire Academy Trust, Unit 20, St Austell Business Park, St Austell, Cornwall PL25 4FD





Padstow School & Nursery

Head of School: Mrs K Whitford

PE

PE will be taught on a **Monday** and **Friday**. Please ensure your child brings their kit to school at the beginning of the week. This can be left in school for the week. We will also have a shorter PE session on a Friday, they can wear their outdoor learning clothes, however, please ensure they have their trainers with them.

We have a football coach coming in for three weeks

PE will be on a Wednesday (not a Monday) on 26th April, 3rd May and 10th May.

Outdoor Learning

This term outdoor learning will take place on **Fridays**. We plan to be outside whatever the weather!

- Each child to keep a pair of wellies in a named bag in school.
- Children to wear suitable clothes for outdoor learning (eg clothes you will not mind coming home muddy!). **Their school jumper should still be worn.**

Other Information:

We encourage your child to have water bottles in school, so they have access to water throughout the day. Snacks from home need to be labelled and put in the snack tray for break time. Please can you help us with our Healthy School status and provide fruit, veg or other healthy snacks. Snack ideas can be found on <https://www.nhs.uk/change4life/food-facts/healthier-snacks-for-kids>.

Could they, also, only bring to school a lunch box (if not having school lunches), coat, hat, sunscreen, book bag and water bottle (**water only**) - all labelled.

I will only be available for a brief exchange of information at the class door so if you feel you need a longer conversation, please make an appointment for me to call you by telephoning or emailing the office, on hello@padstowschool.org, and I will endeavour to get back to you the same day.

Yours sincerely

Mrs Vicky Bruce

Kittiwake Class Teacher and Key Stage One Lead

T: 01841 532510

E: hello@padstowschool.org

W: www.padstowschool.org

Padstow School, Grenville Road, Padstow, Cornwall PL28 8EX

A Company Limited by Guarantee. An Exempt Charity

Registered in England & Wales - Company No. 07387540

Registered Office: Aspire Academy Trust, Unit 20, St Austell Business Park, St Austell, Cornwall PL25 4FD

